



Videntium
Flex

VIDENTIUM FLEX

Progressive software that elevates the construction project's document management, streamlines collaboration, enhances efficiency and ensures precision.



videntium.com



Within the Ajdan Rise Project, the integration of **Videntium Flex** has spurred significant improvements through automated workflows and collaborative task management, **resulting in a 60% overall efficiency boost**. The user-friendly interface and collaborative task management features ensure seamless teamwork, cultivating a more productive and cohesive project environment.

Videntium Flex is a

RESPONSIVE AND COMPREHENSIVE SOLUTION

- Document Version Control
- Custom Workflow Integration
- Organization Chart
- Contract Management
- Bulk Document Upload
- Submission Tracker
- Transmittals
- Audit Trail
- And more...



SCAN & DIVE DEEPER

Scan the QR code to explore all that we have to offer. Find our website, social links, and contact form conveniently grouped in a single QR code for your convenience!

Why Should You CHOOSE US ?

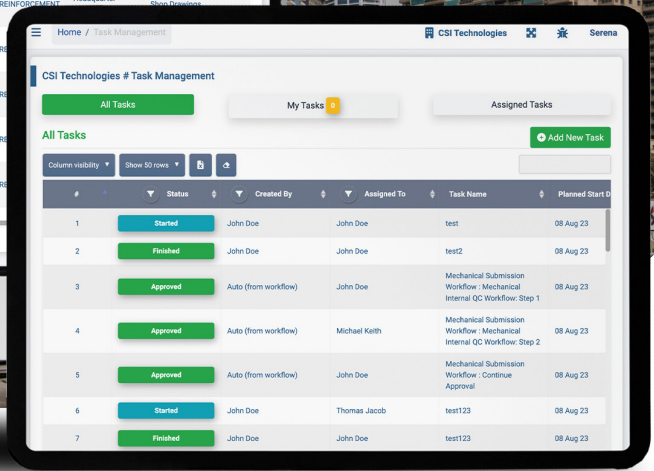
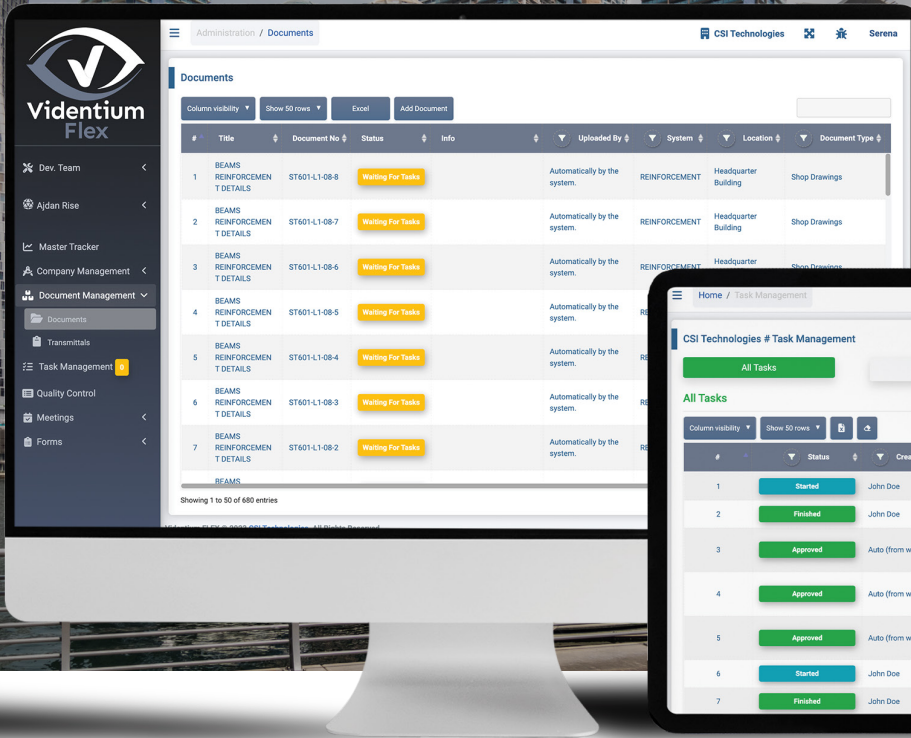
Choose Videntium Flex for unparalleled project success and streamlined collaboration. Our platform empowers you to create a roadmap for project success and define stakeholder types, bringing structure and clarity to collaboration efforts. Uncover relationships and roles effortlessly, visualizing all connections through an intuitive organizational chart. With fully customizable options, tailor the project's location and system structure to meet specific project needs with ease. Videntium Flex offers true flexibility by allowing users to customize document categories, define approval stages, and adapt every detail to ensure a seamless and personalized project management experience. Opt for Videntium Flex for a dynamic and adaptable solution that enhances your project management capabilities.



About Videntium Flex CUSTOMIZABLE WORKFLOW

Videntium Flex empowers the company to create a tailored workflow by elevating efficiency with an automated internal approval workflow. As submissions are made, each document follows a predetermined path, ensuring swift and accurate approvals within the organization.

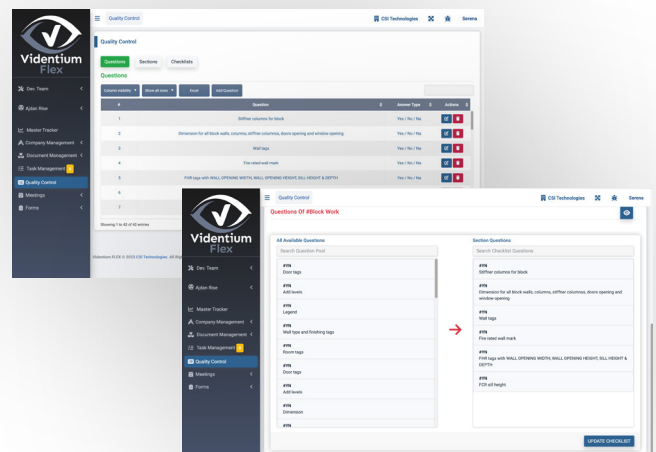
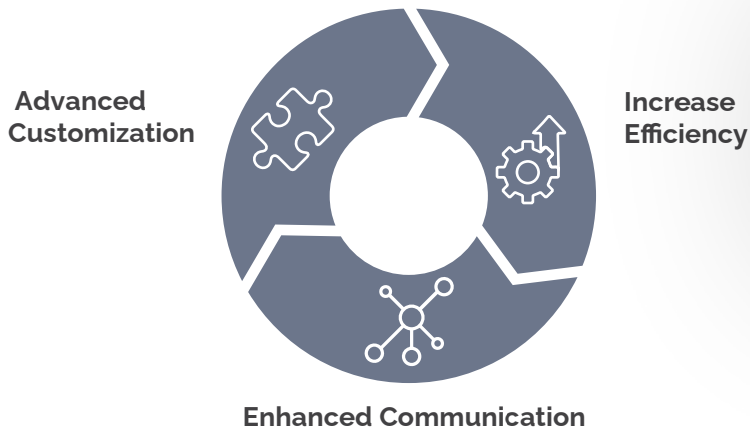
This block contains three overlapping screenshots of the Videntium Flex interface. The top-left screenshot shows the "Workflow Templates" page, listing various internal QC workflows such as "Architectural Internal QC Workflow" and "Electrical Internal QC Workflow". The top-right screenshot shows the "Mechanical Internal QC Workflow # Edit" page, displaying template details and a list of QC checklists. The bottom screenshot shows a detailed view of a workflow step, "Senior QC Check", with a visual flow diagram and participant information (John Doe, Michael Keith).



Features of VIDENTIUM FLEX

- ORGANIZATIONAL CHART
- CUSTOMIZABLE OPTIONS
- DESIGNED FOR INTER-COMPANY COLLABORATIONS
- COMAPANY DETAILS
- NAVIGATE FINANCIAL ASPECTS
- AUTOMATED INTERNAL APPROVAL WORKFLOW
- ANNOTATIONS TRACKER
- CUSTOMIZED ACCESS RIGHTS
- REQUEST FOR INFORMATION (RFI) FEATURE

Benefits Of VIDENTIUM FLEX



Guarantee efficient and precise management for your construction with modular structure of Videntium.



This Is

Videntium

Behind Mega Dreams

DIGITAL TWIN & BIM COMPATIBILITY

Videntium | Digital Twin | Dashboard | Forecasting | Regression | Customization | Alerts

Digital Twin & Simulation Toggle

Outside Temp : 16.5 °C
 Wind Speed : 18.9 m/s
 Indoor Temp : 23.4 °C

Item	Current Readings	Power	Consumption
Hallway Light	60.86 w	90.30 kw/h	90.30 kw/h
Room Light	90.32 w	90.30 kw/h	90.30 kw/h
Pump 1	Offline	Offline	Offline
Pump 2	75.50 l/s	200.56 kw/h	200.56 kw/h
Pump 3	48.78 l/s	200.56 kw/h	200.56 kw/h
Boiler 1	17014.36 btu/h	200.56 kw/h	200.56 kw/h
Boiler 2	15265.01 btu/h	200.56 kw/h	200.56 kw/h
Boiler 3	18275.64 btu/h	200.56 kw/h	200.56 kw/h
Vertical Pump 1	3.28 cfm	200.56 kw/h	200.56 kw/h
Vertical Pump 2	0.90 cfm	200.56 kw/h	200.56 kw/h
Vertical Pump 3	1.50 cfm	200.56 kw/h	200.56 kw/h
Valve	18.28 cfm	200.56 kw/h	200.56 kw/h

Switch Day / Night

Device Readings & Power Consumptions Toggle Emergency Off All Devices On

Corridor Lighting

Reading: 60.86 w
Power Consumption: 59.77 kw/h
3 ESMS Activated

[Click To Download Report](#)

Boiler 1

Reading: 17014.36 btu/h
Power Consumption: 200.56 kw/h
1 ESMS Activated

[Click To Download Report](#)

Boiler 2

Reading: 15265.01 btu/h
Power Consumption: 180.86 kw/h
2 ESMS Activated

[Click To Download Report](#)

JF-04-02 Visit Equipment

INFO

Type Name	Location
Jet Fans	Access Ramp
Status	% Planned
Commissioned	Powered

CHECKLISTS

Equipment Progress 100%

Pre-Requsite Checklist

Progress	Calculated %
(15 / 15) -100%	33.33 %

Slim Jet Fan Pre-Commissioning Checklist

Progress	Calculated %
(20 / 20) -100%	33.33 %

Slim Jet Fan Commissioning Checklist

Progress	Calculated %
(18 / 18) -100%	33.33 %

SOR

Progress	Calculated %
(0 / 0) -100%	0 %



CSI Technologies
Move Forward

csicxt.com

info@csicxt.com